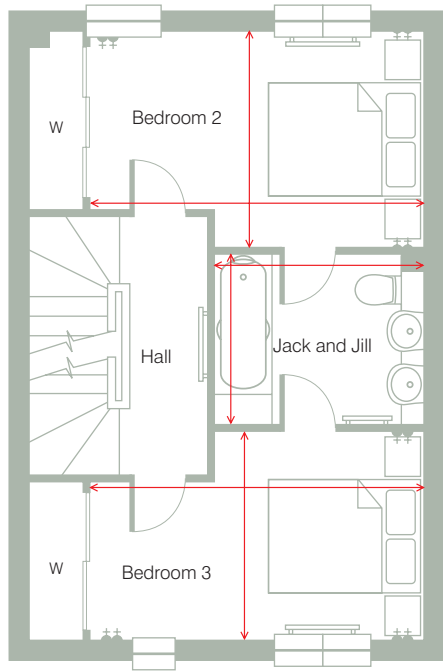




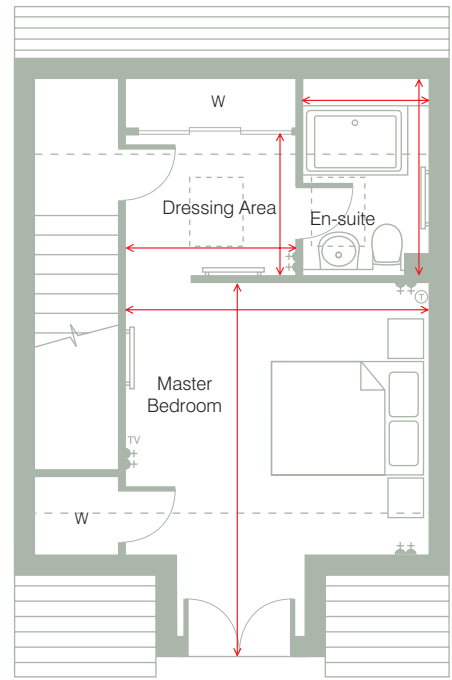
## The MacDonald

A 3 double bedroom townhouse that offers well-proportioned accommodation and ample storage throughout. A spacious kitchen / family room with double doors onto the garden offers a flexible, open plan living area with sliding doors opening into a generous lounge. On the first floor, two double bedrooms have access to a Jack and Jill bathroom with double sink. The second floor features the master bedroom, with en-suite, dressing area and Parisian style balcony.

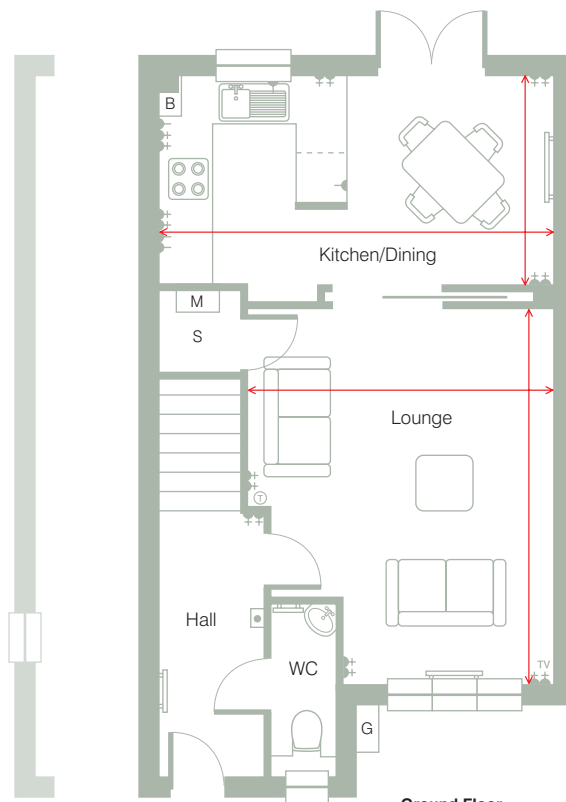
	Width (mm)	Depth (mm)	Width (ft)	Depth (ft)
Kitchen/Dining	4,711	2,534	15' 6"	8' 3"
Lounge	3,641	4,513	11' 11"	14' 9"
Master Bedroom	2,816	4,334	9' 3"	14' 3"
Dressing Area	1,699	1,971	5' 7"	6' 6"
Bedroom 2	4,023	2,535	13' 2"	8' 3"
Bedroom 3	4,023	2,600	13' 2"	8' 6"
Jack and Jill	2,035	2,539	6' 8"	8' 4"
En-suite	1,500	2,031	4' 11"	6' 8"



First Floor



Second Floor



Ground Floor

End terrace

Mid terrace

Plot numbers: 23, 24, 25, 36, 40, 41, 42, 43, 63, 64, 65, 67, 68, 69, 73, 74 & 75

Please refer to page 26 for important information.