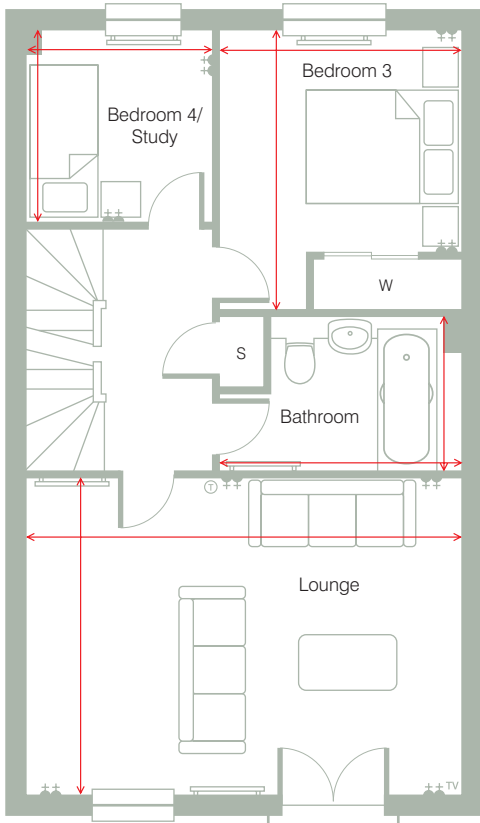




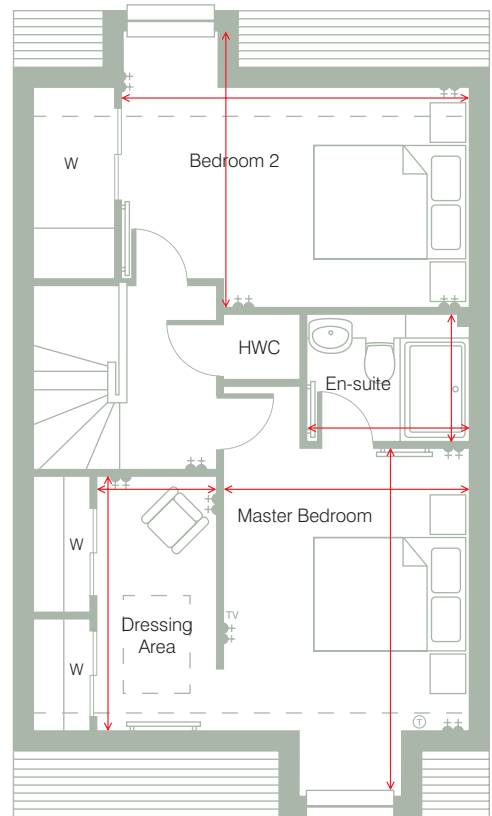
The Allan

A 4 bedroom townhouse offering generous kitchen and family room with double doors onto garden, utility room and separate dining room on ground floor. On the first floor, a light and spacious lounge features Parisian style balcony with bedrooms 3 & 4 being accessed from main landing. The second floor features master bedroom with dressing area and en-suite and further well-proportioned second bedroom.

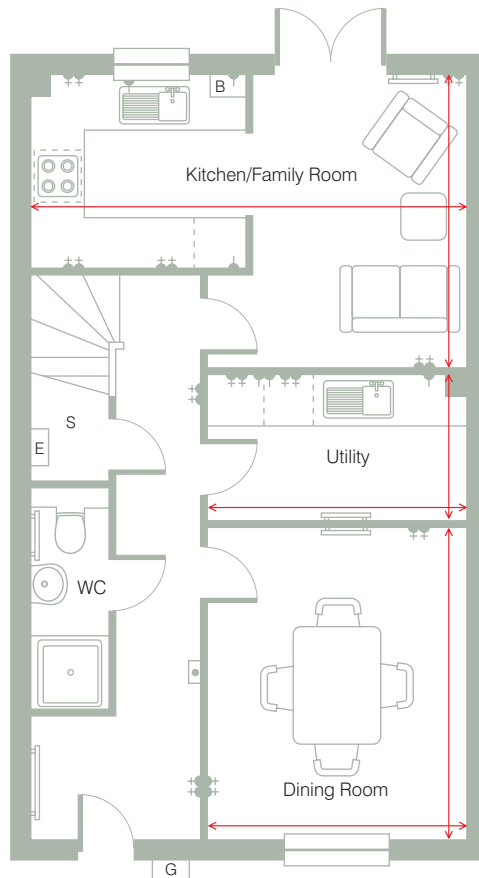
	Width (mm)	Depth (mm)	Width (ft)	Depth (ft)
Kitchen/Family Room	5,123	3,425	16' 10"	11' 3"
Utility	3,002	1,673	9' 10"	5' 6"
Lounge	5,132	3,718	16' 10"	12' 2"
Dining Room	3,002	3,683	9' 10"	12' 1"
Master Bedroom	2,896	4,212	9' 6"	13' 10"
Dressing Area	1,448	3,118	4' 9"	10' 3"
Bedroom 2	4,186	3,285	13' 9"	10' 9"
Bedroom 3	2,762	3,626	9' 1"	11' 10"
Bedroom 4/Study	2,271	2,254	7' 5"	7' 4"
Bathroom	2,112	1,824	6' 11"	6' 0"
En-suite	1,500	1,912	4' 11"	6' 3"



First Floor



Second Floor



Ground Floor

Plot numbers: 1, 2, 3, 4, 17, 18, 37, 38, 39, 50, 51, 59, 60, 61, 62, 70, 71, 72 & 83

Please refer to page 26 for important information.