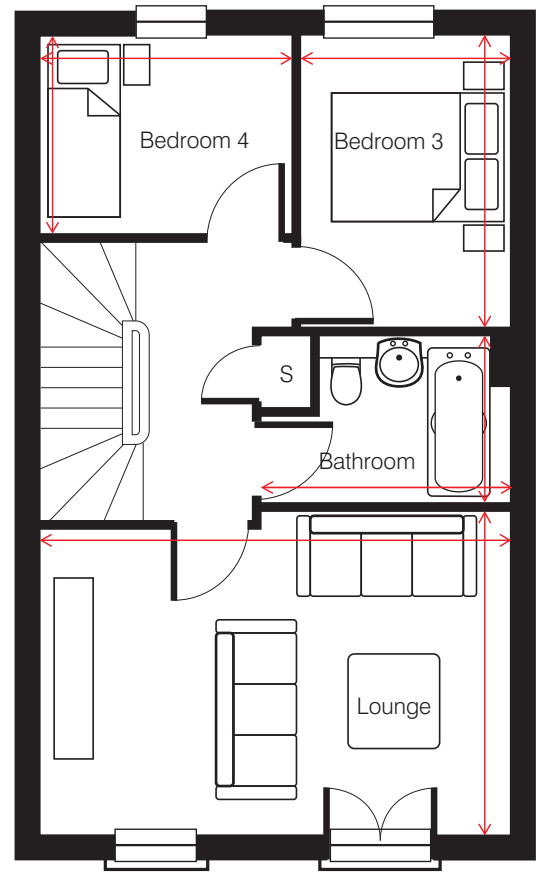
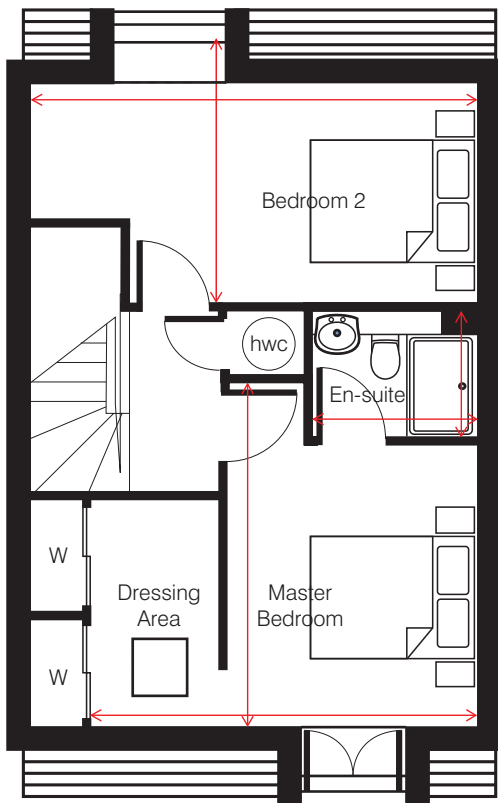


Allan – Ground Floor



Allan – First Floor



Allan – Second Floor

## The Allan

Kitchen/Family	5280 x 3424	17' 4" x 11' 3"
Dining Room	3000 x 4000	9' 10" x 13' 1"
WC	1100 x 1791	3' 7" x 5' 11"
Utility	3000 x 1402	9' 10" x 4' 7"
Lounge	5281 x 3642	17' 4" x 11' 11"
Bedroom 3	2336 x 3315	7' 8" x 10' 11"
Bedroom 4	2856 x 2254	9' 4" x 7' 5"
Bathroom	2145 x 1900	7' x 6' 3"
Master Bedroom	4592 x 4198	15' 1" x 13' 9"
En-suite	1930 x 1500	6' 4" x 4' 11"
Bedroom 2	5281 x 3464	17' 4" x 11' 4"

The **Avenue**&

Floor plans show approximate dimensions of each room and are taken from the widest point on each floor plan. These may vary with precise internal finishes of each house may not be exactly the same. Please discuss with Sales Consultant for final positioning layouts. Please refer to selling agent for further details, along with the important information sheet. Plots may be handed. \*S

hin NHBC guidelines – the of radiators, powerpoints and kitchen tore cupboard contains meters.